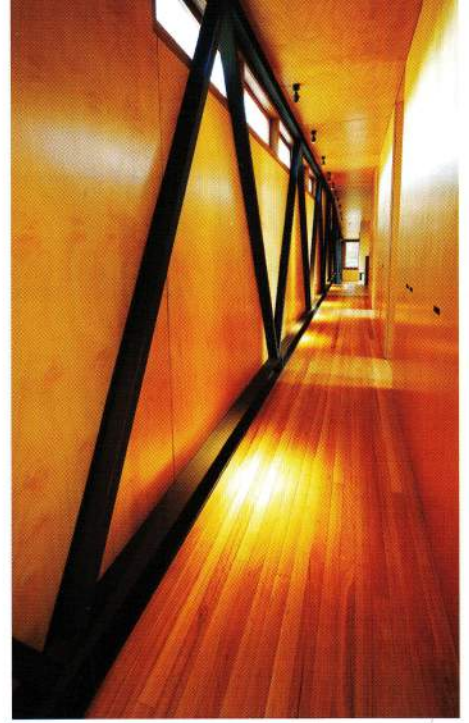
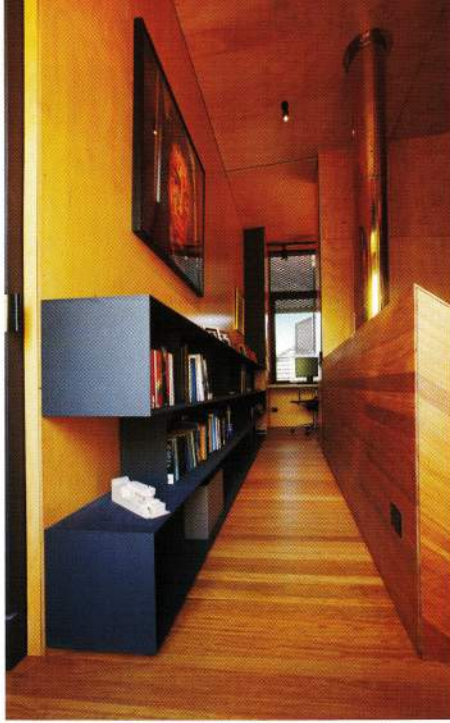


BEST USE OF TIMBER FLOORING



At the October 18 presentation night in Melbourne the winners of the Australian Timber Design Awards were announced, with architects Bureau SRH in New South Wales taking the award for the Best Use of Timber Flooring.

The entry was also awarded Best Interior Fitout – Residential.

The residence is conceived as two elements; a solid concrete base which is the entry to the home and a perforated brass and timber box which is the private areas of the home.

Between these two contrasting cool and warm elements is a negative space that forms an open living platform.

The floor joists exposed to the living platform are Douglas Fir LVLs lightly sanded but still branded and unsealed.

These LVLs span over six metres, and at one end are hung from a steel truss that spans 15 metres, and cantilevers 7 metres.

In order to expose the floor joists, a 100mm thick layering of floor materials was designed to mitigate noise transfer between floors.

The internal walls and ceilings of the timber box are lined in a low formaldehyde hoop pine with expressed joints and countersunk screw fixings.

The floorboards to this level fold down to clad the lift core and stairs, where the treads are a composite blackbutt cladding and Douglas Fir LVLs.

The timber flooring and lining was 60mm Blackbutt flooring, supplied by Nash Timbers and finished with Livos Ardvos Wood Oil.

(Photos by Jessica Maurer and David Mercer).



TIMBERMATE®

Water-based Woodfiller

Now Available in Trowelable



Wood Putty

GrainFiller

EdgeFiller

CrackFiller



- UNLIMITED SHELF LIFE
- NO WASTE
- NON CRACKING
- WON'T FALL OUT
- NON SINKING
- NON SHRINKING
- NON FLAMMABLE

Non-acrylic Water-based Woodfiller

Another Quality Product from the
Timbermate® group
www.timbermate.com.au
Toll Free: 1800 354 811 (ex mob)
 Mel: (03) 9873 4811 – Syd: (02) 9983 9906