

Colour me house

The renovated inner Melbourne home of cartoonist Judy Horacek and writer and academic Francesca Rendle-Short is a celebration of colour and light and the three Rs: reduce, reuse and recycle.

WORDS Verity Campbell
PHOTOGRAPHY Emma Cross

⊖
Independent Cement & Lime Eco-Blend concrete, made up of industrial by-products slag & fly ash, was used for thermal mass in the open plan kitchen and dining, with recycled glass for seeding the surface.

LIKE MANY HOMES OF THE ERA, the double-fronted weatherboard was dark, draughty and uninsulated – stifling through summer, freezing in winter. The couple enlisted Ande Bunbury Architects to open it up. Ande's brief was to keep as much of the garden as possible, minimising any increase to the home's footprint. The couple "didn't want a big square box at the end of the house", but they did want a variety of views and a feeling of openness – a flow from house to garden wherever possible. "The core idea for this project was that a small house, if well designed and functional, is a good house," says Ande.

Ande's first challenge was to work out how to introduce more natural light and ventilation into the east-west block. The house to the north was built right on the boundary, overshadowing the entire length of the home. Ande set to work reconfiguring the existing dwelling, introducing windows on the northern facade and switching the bathroom with the original south-facing dining room. A courtyard was introduced to the south of the home to bring in light and ventilation to the kitchen and bathroom areas, and to provide a cool air inlet for the ventilated pantry under the stairs.

→



1

The clerestory windows help bring more natural light into the living areas, which have been moved north and overlook the garden. A courtyard to the south draws cool air to the centre of the home. The pantry is also ventilated via thermal 'draw' from the freezer.

The main living areas were moved to the north of the property. The new open plan kitchen, dining and living area overlooks the garden, and opens through picture-window sliding-doors to a new courtyard. A skillion roof and clerestory windows draw in northern light.

The renovation introduces a private rooftop deck to the north. The deck is accessed from the stairway, which incorporates external bike storage, a pantry and drying space, while also acting as a thermal chimney to exhaust hot air during summer.

The kitchen is a standout. "I have to give full credit to the clients for the kitchen," Ande laughs. Judy and Francesca opted to retain their original 1960s kitchen cabinetry, but it was Ande's openness to the idea, they

state, that won her the job. "There probably aren't a lot of architects willing to reinstall old kitchen cupboards into a shining new space," says Francesca.

The kitchen cabinetry was reconfigured to fit the new space. Luckily the hardwood joinery units were in good condition, needing minimal repair and modification. Newer cabinets made of chipboard are much harder to reuse, says Ande. To keep costs down, freestanding IKEA pieces were installed where necessary. The kitchen was also designed so that if it needs to be replaced it can be done with minimal expense.

Secondhand materials don't necessarily equal budget savings, Ande cautions, due to the extra labour costs. "Watch out for secondhand windows in particular," she



Ande Bunbury's design maximises space with only a slight increase in the building footprint, allowing plenty of space for food growing.



The pre-loved jarrah stairway is a distinctive feature of their home, with replaced treads adding character. The landing also serves as a natural clothes drying room with a high-level drying rack, benefiting from north- and east-facing windows which flood this area with sun.



adds. "By the time you modify a window for double glazing you haven't saved much on buying a new window." On the other hand, she adds, it's about being smart where you do double glaze. "In this job, for example, we didn't double glaze the bathroom window. After all, why double glaze when you will have it open most of the time for ventilation?"

Ideas such as this offered the opportunity to reuse materials in interesting

ways. "It's the one-off original pieces that make this place special," Ande adds. She cites the pre-loved stairway Judy and Francesca sourced as a distinctive feature of the home, with any treads that needed to be changed only adding originality. "Reusing materials can allow creative problem solving, and what you end up with is a home like this, a home with a special ambience and its own unique character." **S**

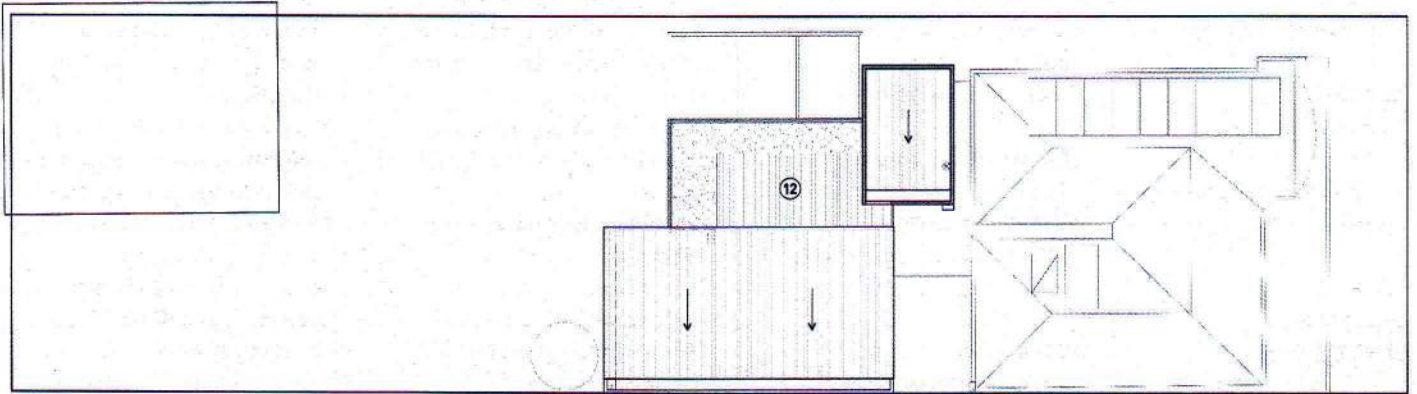
11

A range of innovative outdoor spaces, including a rooftop deck, helped to limit the home's footprint, offer ventilation and provide food growing opportunities. The deck can be used as an outdoor bedroom for extremely hot nights, while stairs to it act as a thermal chimney to exhaust hot air from the house.

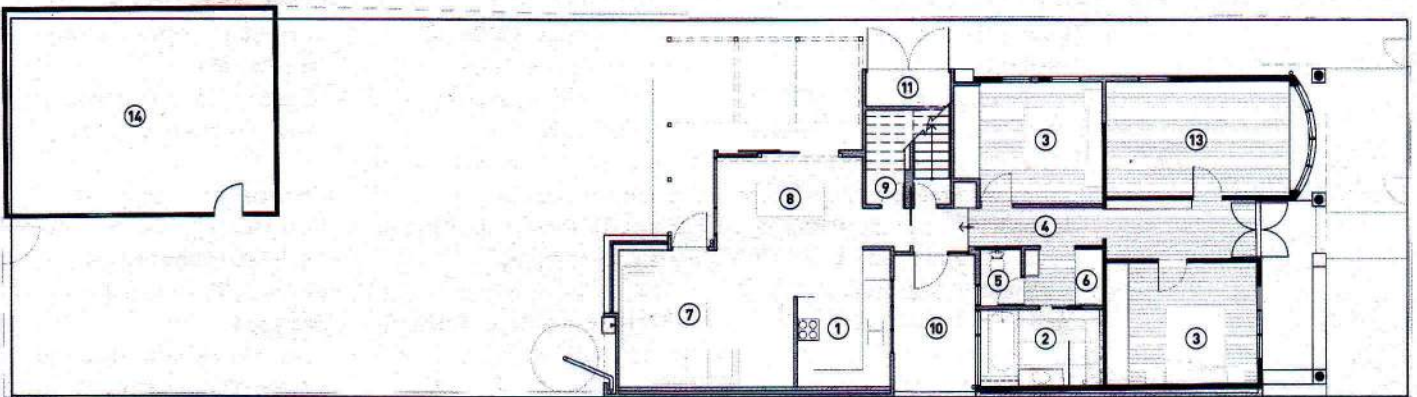


The recycled kitchen is the standout feature of this thoughtful renovation, with original cabinetry reconfigured for the new space.

UPPER ROOF PLAN



GROUND FLOOR PLAN



LEGEND

- | | |
|------------|------------------|
| ① Kitchen | ⑧ Dining |
| ② Bathroom | ⑨ Pantry (under) |
| ③ Bedroom | ⑩ Courtyard |
| ④ Hall | ⑪ Bike store |
| ⑤ Toilet | ⑫ Rooftop deck |
| ⑥ Laundry | ⑬ Library |
| ⑦ Living | ⑭ Shed |

Colour house

—Specifications

Credits

DESIGN

Ande Bunbury Architects

BUILDER

Sheringham Construction

PROJECT LOCATION

Brunswick, VIC

SIZE

House 134 sqm

Land 377 sqm

Sustainable Features

HOT WATER

- Apricus evacuated tube solar hot water system with Everlast 250L stainless steel storage tank
- Rinnai S26 gas booster.

RENEWABLE ENERGY

- Existing 1.5kW photovoltaic solar electric system.

WATER SAVING

- Tankworks round corrugated iron rainwater tanks (total 6380L)
- Separate greywater and blackwater pipes from bathroom
- Grey Water Gaterpro diversion system connected to garden irrigation
- Abey/Plumbcraft tapware, WELS 4-star rating
- Flow restrictors to basin taps & low-flow showerhead
- Caroma Profile 5 toilet with hand-wash sink integrated with toilet cistern, WELS 5-star rated, 4.5/3L hand-washing water refills the toilet cistern
- External sink diverts water straight onto garden.

PASSIVE HEATING & COOLING

- All living areas oriented to the north
- Concrete slab and reverse brick feature wall in living room for thermal mass
- Skillion roof over the living room & kitchen allows north light into south side of house
- Courtyard to the south side of the house draws in cool air for cross ventilation
- Freezer creates thermal 'draw' for ventilated pantry

- Ducting system draws in external cool air while hot air is released through roof with a rotary ventilator
- Stairs to rooftop deck act as thermal chimney to exhaust hot air
- High-level Breezeway Altair louvre windows for cross ventilation
- Pergola with Issey Maxisun retractable awning blind for summer shading
- Tontine recycled polyester batts & sarking, R5.5 in roof & R3.8 in stud-frame walls
- R1.5 CSR Bradford Sound Screen rockwool batts in internal walls
- R1.1 Dow Styrofoam 30mm polystyrene in slab edge
- R2.2 Foilboard Super 15 for timber flooring
- R0.53 Fletcher Insulation Armaflex closed cell elastomeric thermal insulation for lagging to pipes.

ACTIVE HEATING & COOLING

- Gas-fired hydronic heating Sime Format 34E high-efficiency modulating boiler
- HPM AirBoss ceiling fans & Fanco metal wall fan from Universal Fans
- Draft Stoppa duct vent to exhaust fans seals when not in use.

BUILDING MATERIALS

- Termimesh stainless steel mesh termite treatment
- Independent Cement & Lime Eco-Blend concrete
- Recycled glass for seeding the surface of polished concrete slab

- Recycled Tasmanian oak timber flooring and external decking board from Just Old Flooring
- Recycled jarrah balustrades, staircase, window frames and shelves from Urban Salvage
- CSR fibre cement boards/sheets for exterior cladding
- Re-use of existing kitchen joinery, weatherboards, floorboards, bricks and rainwater tank
- New joinery EO MDF board, Laminex Green First range.

WINDOWS AND GLAZING

- All windows double-glazed except louvre windows
- Issey external blinds to west-facing windows
- Luxaflex Duette honeycomb insulating internal blinds.

LIGHTING

- Fluorescent or LED throughout; inc. Mlight Mino recessed battens & Tom Dixon Beat pendants
- Task lighting rather than high levels of illumination.

PAINTS, FINISHES & FLOOR COVERINGS

- Wattyl i.d low-VOC interior acrylic paint
- Wattyl Solaguard external paint
- Livos natural oil sealers.

OTHER ESD FEATURES

- Only slight increase to footprint
- Bike store on the side of the house
- Oversized gutters and downpipes for future severe weather events
- Waste Management Plan minimised construction waste.